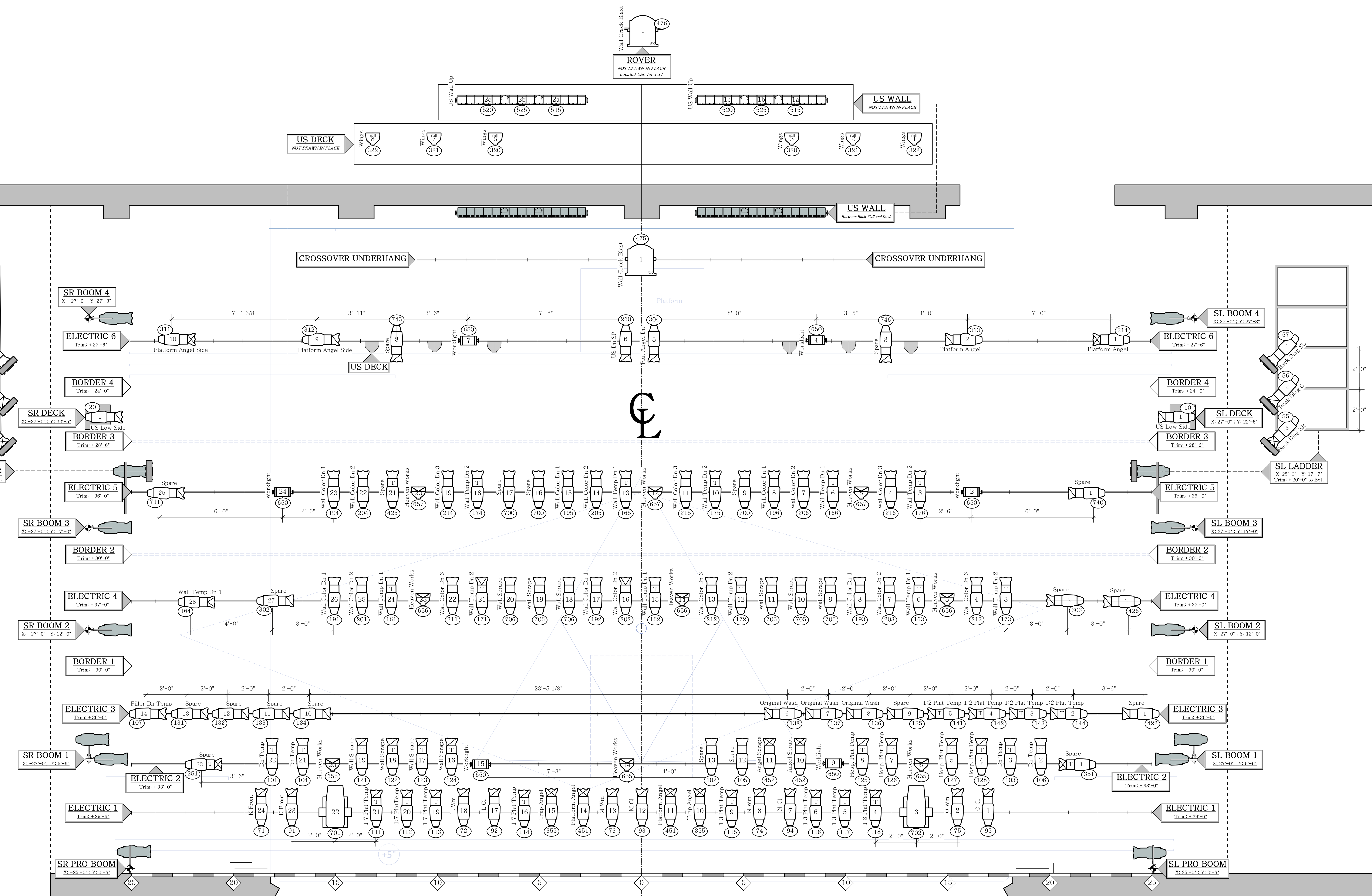


Trim	Description	Dist.	LS#
	Mirror Wall		PP
	Angel Wing Rlx	27'10"	43
	Traveler	24'11"	39
	Black Legs	24'4"	38
	RP Storage	23'3"	36
		22'7"	35
		21'9"	34
		21'2"	33
		20'7"	32
		19'11"	31
		19'4"	30
		18'1"	28
		17'6"	27
		16'10"	26
		16'3"	25
		15'8"	24
		15'1"	23
		14'6"	22
		13'11"	21
		12'9"	19
		12'2"	18
		11'6"	17
		10'8"	16
		10'2"	15
		9'7"	14
		8'11"	13
		8'3"	12
		7'4"	10
		6'9"	9
		6'0"	8
		5'4"	7
		4'0"	5
Trim	Description	Dist.	LS#



KEY TO SYMBOLS

- ETC SOURCE 4 15' 575W
- ETC SOURCE 4 26' 575W
- ETC SOURCE 4 36' 575W
- ETC SOURCE 4 W/ SCROLLER 575W
- ETC SOURCE 4 ON FLOORMOUNT 575W
- ETC SOURCE 4 PAR MFL 575W
- ETC SOURCE 4 PAR WFL 575W
- MINI 10 - WORKLIGHT 500W
- 5K FRESNEL 5KW
- VL3500Q SPOT 1200W
- 6' MR16 MINISTRIP 750W

NOTATION

Purpose Color
Template
Dimmer Channel

NOTES

Measurements of the US units will be based on scenic elements

Units with no dimension marks have a 1'-6" spacing

Please drop color prior to focus

Please have extra R119 & R132 on hand for focus

Please have top hats & half hats available during focus

Please do not make any changes without consulting the designer

THIS DRAWING REPRESENTS VISUAL CONCEPTS AND CONSTRUCTION SUGGESTIONS ONLY. IT DOES NOT REPLACE THE KNOWLEDGE AND ADVICE OF A LICENSED STRUCTURAL ENGINEER. THE DESIGNER IS UNQUALIFIED TO DETERMINE THE STRUCTURAL APPROPRIATENESS OF THIS DESIGN AND WILL NOT ASSUME RESPONSIBILITY FOR IMPROPER ENGINEERING OR USE.

Direction.....Jim Petosa
Scenic Design.....Ryan Bates
Lighting Design.....J. Elliott
Assit. LD.....Andy Auyong
ML Programmer.....M. Lorinicz
Master Elec.....Sean Baird
Costume Design.....Emma Connelly

Drafted by: J. Elliott & A. Auyong

A	1.11.15	E
B	1.16.15	F
C	1.19.15	G
D	1.23.15	H

BOSTON UNIVERSITY
The Boston University Theatre
264 Huntington Ave
Boston, MA 02115

ANGELS IN AMERICA

SCALE: 1/2" = 1'-0"
UNLESS NOTED

DATE: 1.25.15

Plate 1 of 4

OVERHEAD & DECK