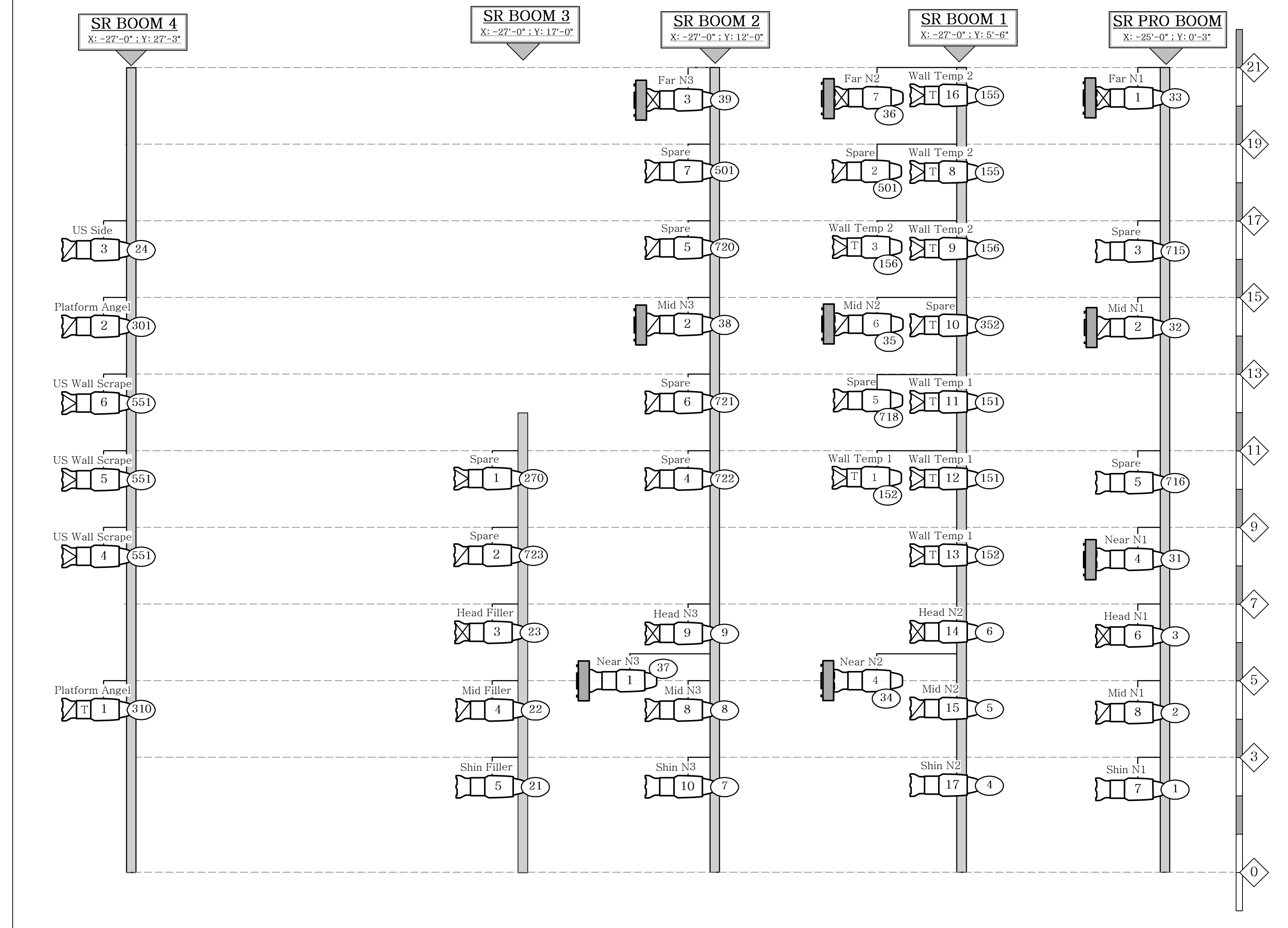
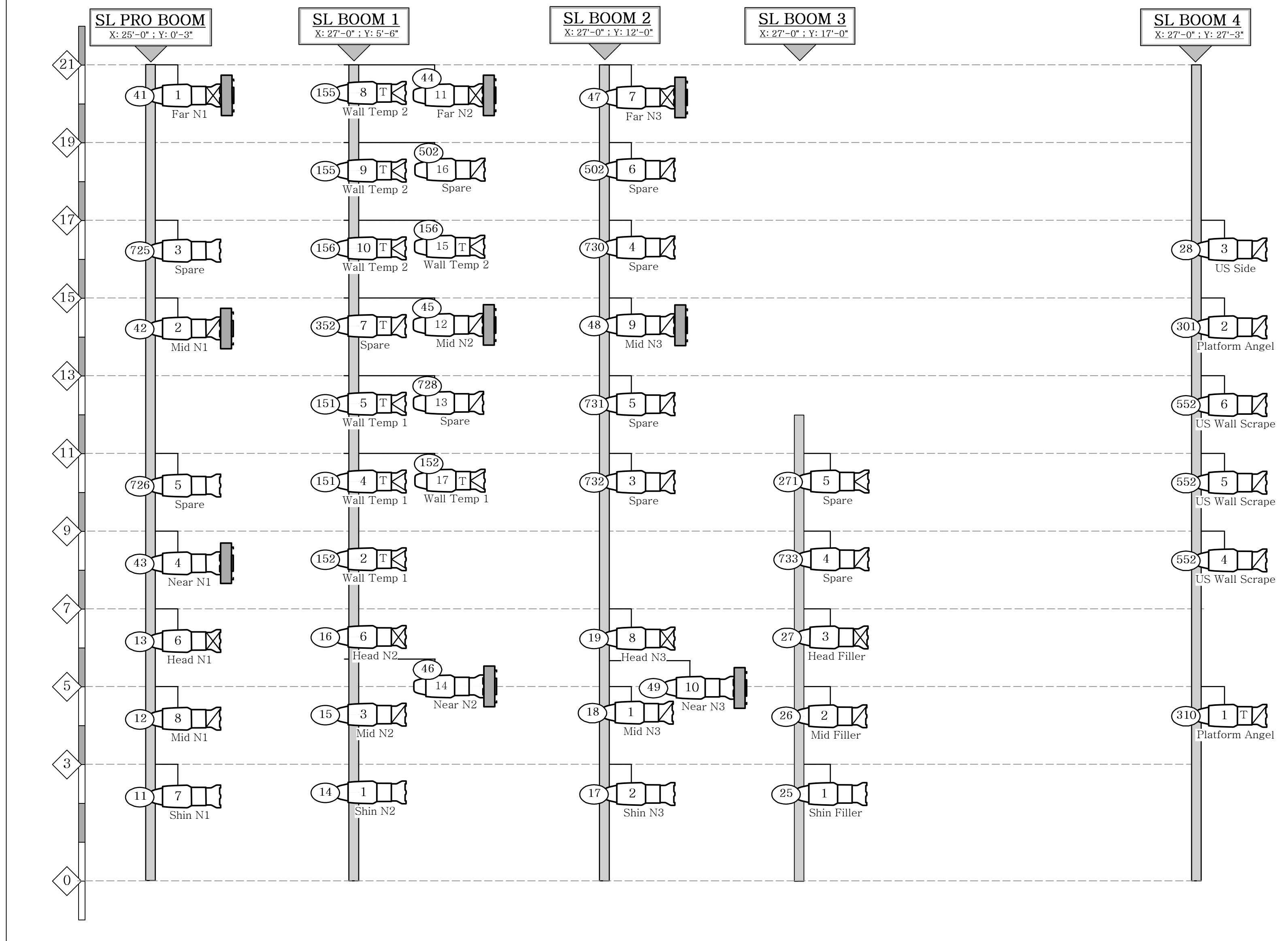


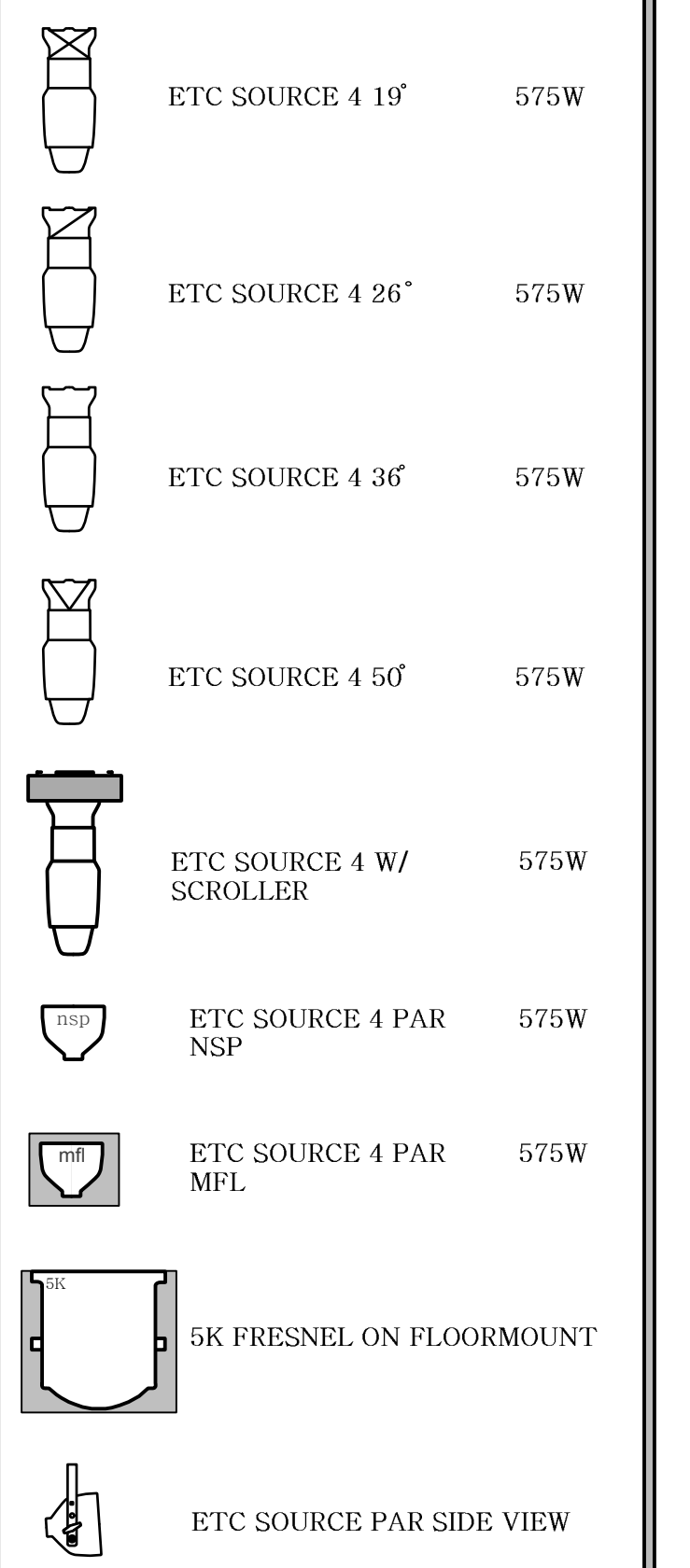
SR BOOM DETAIL



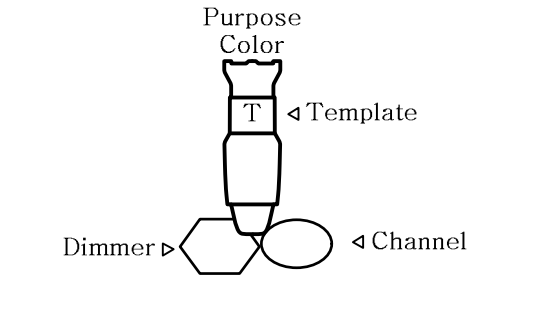
SL BOOM DETAIL



KEY TO SYMBOLS



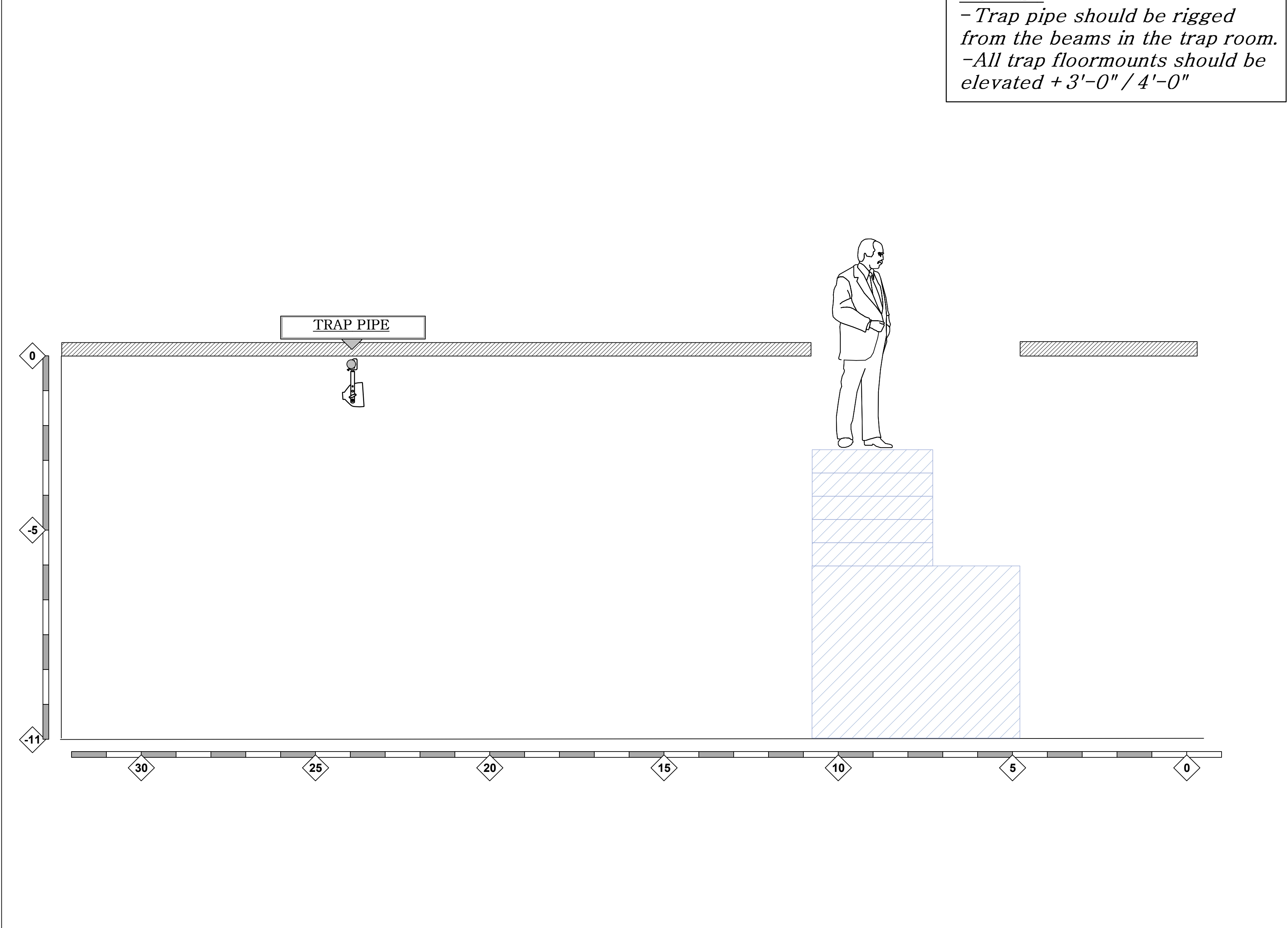
NOTATION



NOTES

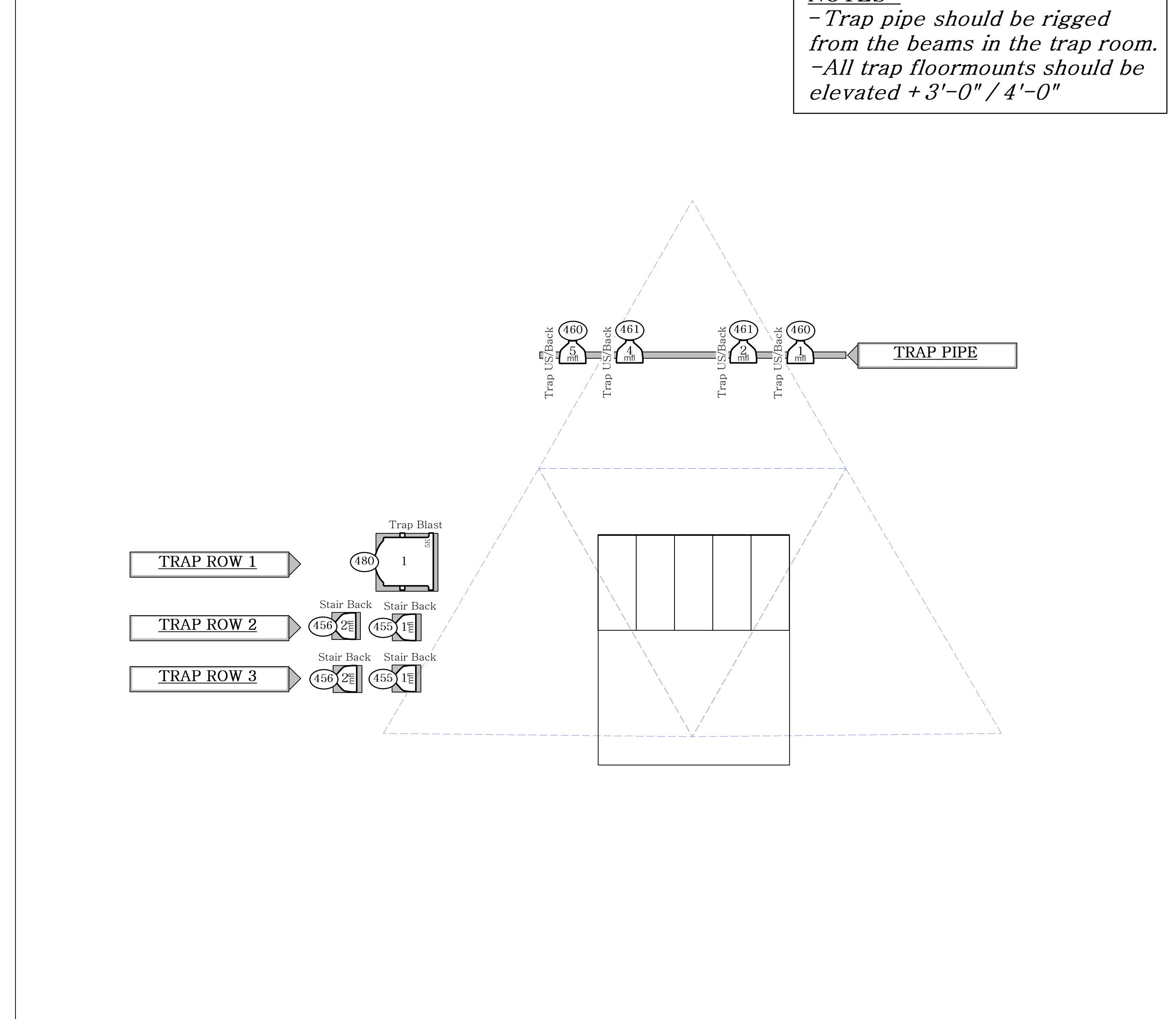
Measurements are from the deck to the side arm
 All booms should be flanged to deck
 There will be a tab behind Booms 1-3
 Please drop color prior to focus
 Please have extra R119 & R132 on hand for focus
 Please have top hats, half hats & barn doors available during focus
 Please do not make any changes without consulting the designer

TRAP SECTION



NOTES:
 - Trap pipe should be rigged from the beams in the trap room.
 - All trap floormounts should be elevated + 3'-0" / 4'-0"

TRAP DETAIL



NOTES:
 - Trap pipe should be rigged from the beams in the trap room.
 - All trap floormounts should be elevated + 3'-0" / 4'-0"

THIS DRAWING REPRESENTS VISUAL CONCEPTS AND CONSTRUCTION SUGGESTIONS ONLY. IT DOES NOT REPLACE THE KNOWLEDGE AND ADVICE OF A LICENSED STRUCTURAL ENGINEER. THE DESIGNER IS UNQUALIFIED TO DETERMINE THE STRUCTURAL APPROPRIATENESS OF THIS DESIGN AND WILL NOT ASSUME RESPONSIBILITY FOR IMPROPER ENGINEERING OR USE.

Direction.....Jim Petosa
 Scenic Design.....Ryan Bates
 Lighting Design.....J. Elliott
 Assit. LD.....Andy Auyong
 ML Programmer.....M. Lorinczi
 Master Elec.....Sean Baird
 Costume Design.....Emma Connelly

Drafted by: J. Elliott & A. Auyong

A	1.11.15	E
B	1.16.15	F
C	1.19.15	G
D	1.23.15	H



The Boston University Theatre
 264 Huntington Ave
 Boston, MA 02115



SCALE: 1/2" = 1'-0"
 UNLESS NOTED
 DATE: 1.25.15